

ČÍSLO APARTMÁNU  
APARTMENT **E305**

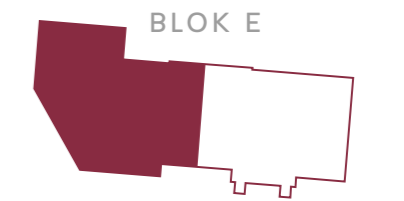
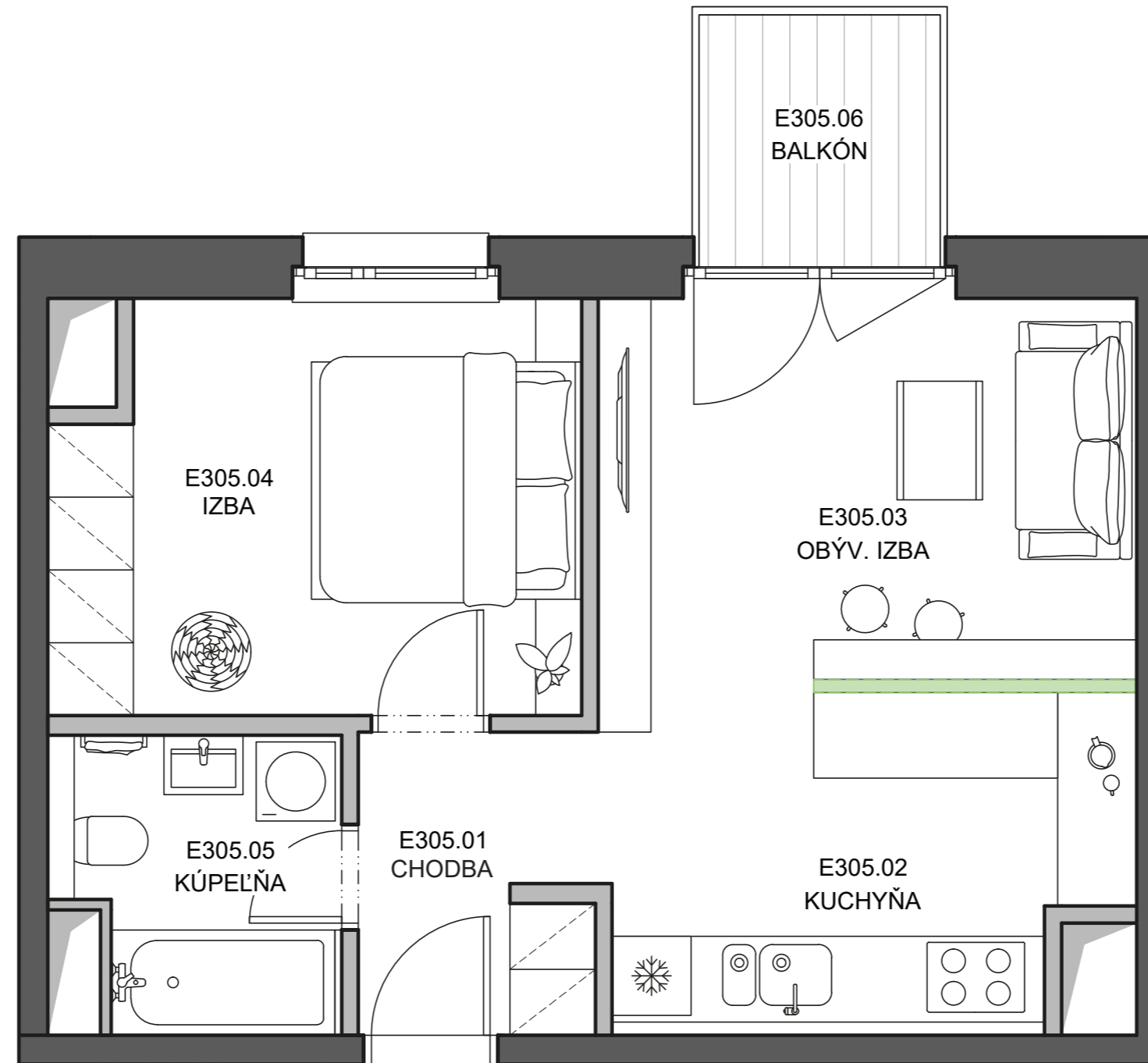
PODLAŽIE  
FLOOR **3.NP**

ČÍSLO DOMU  
BUILDING **V2A**

POČET IZIEB  
ROOMS **2**

|  |                           |
|--|---------------------------|
| 01. Chodba<br>01. Hall                   | 4,5 m <sup>2</sup>        |
| 02. Kuchyňa<br>02. Kitchen               | 9,8 m <sup>2</sup>        |
| 03. Obývacia izba<br>03. Living room     | 12,6 m <sup>2</sup>       |
| 04. Izba<br>04. Room                     | 12,2 m <sup>2</sup>       |
| 05. Kúpeľňa<br>05. Bathroom              | 4,6 m <sup>2</sup>        |
| <b>Plocha interiéru</b><br>Interior area | <b>43,7 m<sup>2</sup></b> |
| 06. Balkón<br>06. Balcony                | 3,7 m <sup>2</sup>        |

**Celková plocha apartmánu**  
Apartment area **47,40 m<sup>2</sup>**



**DEVELOPER:**  
VYDRICA DEVELOPMENT, a.s.  
STEINERKA Business Center  
Legionárska 10, 811 07 Bratislava

**PREDAJ/SALES:**  
+421 910 635 645 | predaj@vydrica.com  
www.vydrica.com

ČÍSLO APARTMÁNU  
APARTMENT **E305**

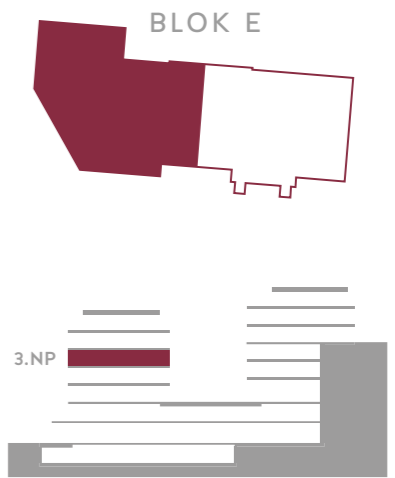
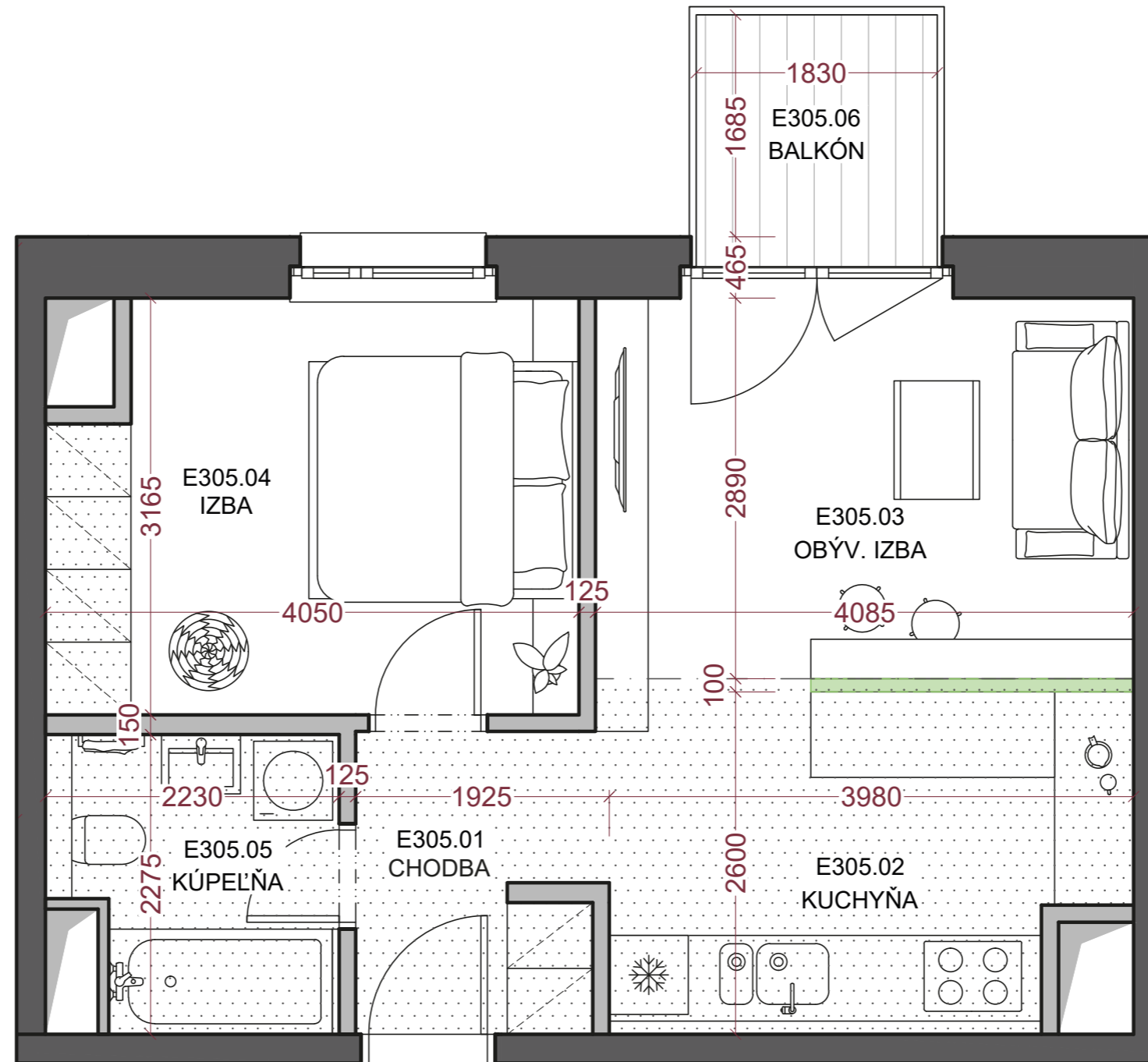
PODLAŽIE  
FLOOR **3.NP**

ČÍSLO DOMU  
BUILDING **V2A**

POČET IZIEB  
ROOMS **2**

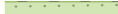
|  |                           |
|--|---------------------------|
| 01. Chodba<br>01. Hall                   | 4,5 m <sup>2</sup>        |
| 02. Kuchyňa<br>02. Kitchen               | 9,8 m <sup>2</sup>        |
| 03. Obývacia izba<br>03. Living room     | 12,6 m <sup>2</sup>       |
| 04. Izba<br>04. Room                     | 12,2 m <sup>2</sup>       |
| 05. Kúpeľňa<br>05. Bathroom              | 4,6 m <sup>2</sup>        |
| <b>Plocha interiéru</b><br>Interior area | <b>43,7 m<sup>2</sup></b> |
| 06. Balkón<br>06. Balcony                | 3,7 m <sup>2</sup>        |


**Celková plocha apartmánu**  
Apartment area **47,40 m<sup>2</sup>**



Plocha priestorov pod svetlou výškou do 1,3 m vo výmere - m<sup>2</sup> nie je započítaná do plochy apartmánu.

The part of the premises where floor-to-ceiling height is below 1,3 m, which means the area of - m<sup>2</sup>, is not included in the whole area of the apartment.

 Murovaná pórobetónová priečka do výšky pracovnej dosky kuchynskej linky. A masonry partition wall made of aerated concrete, extending up to the level of the kitchen countertop.

 Znížená svetlá výška. Lowered floor-to-ceiling height.

**DEVELOPER:**  
VYDRICA DEVELOPMENT, a.s.  
STEINERKA Business Center  
Legionárska 10, 811 07 Bratislava

**PREDAJ/SALES:**  
+421 910 635 645 | predaj@vydrica.com  
www.vydrica.com