

ČÍSLO APARTMÁNU
APARTMENT **E205**

PODLAŽIE
FLOOR **2.NP**

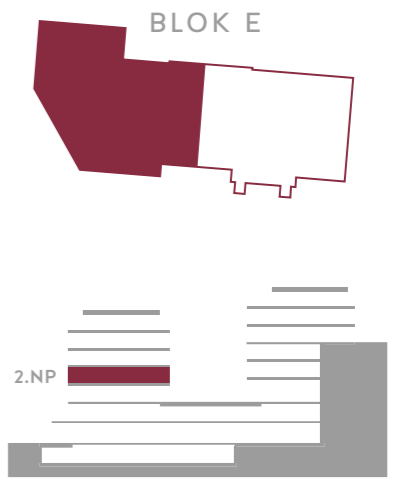
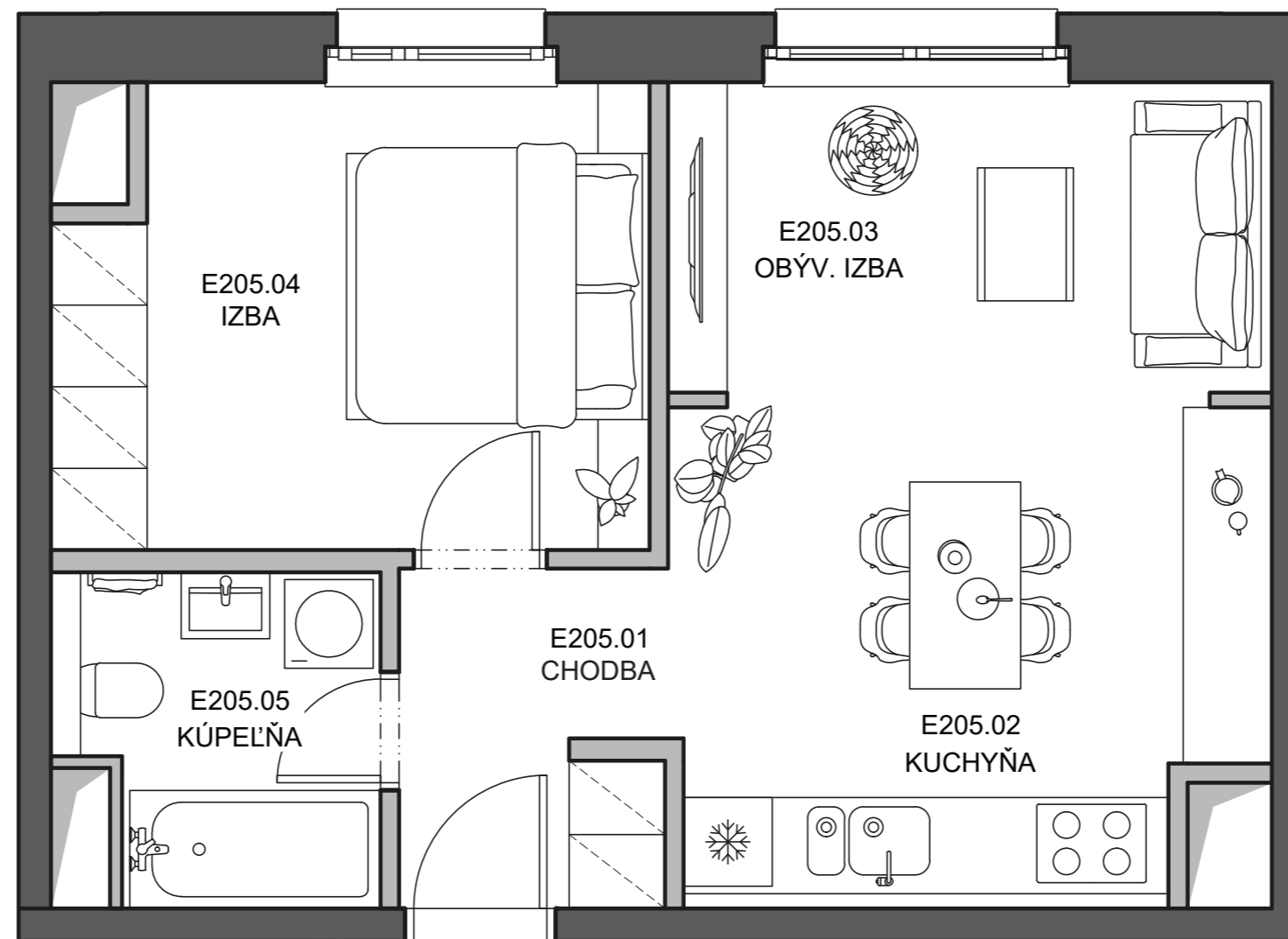
ČÍSLO DOMU
BUILDING **V2A**

POČET IZIEB
ROOMS **2**

- 01. Chodba 8,2 m²
01. Hall
- 02. Kuchyňa 9,6 m²
02. Kitchen
- 03. Obývacia izba 8,6 m²
03. Living room
- 04. Izba 12,2 m²
04. Room
- 05. Kúpeľňa 4,6 m²
05. Bathroom

Plocha interiéru **43,2 m²**
Interior area

Celková plocha apartmánu **43,20 m²**
Apartment area



DEVELOPER:
VYDRICA DEVELOPMENT, a.s.
STEINERKA Business Center
Legionárska 10, 811 07 Bratislava

PREDAJ/SALES:
+421 910 635 645 | predaj@vydrica.com
www.vydrica.com

ČÍSLO APARTMÁNU
APARTMENT **E205**

PODLAŽIE
FLOOR **2.NP**

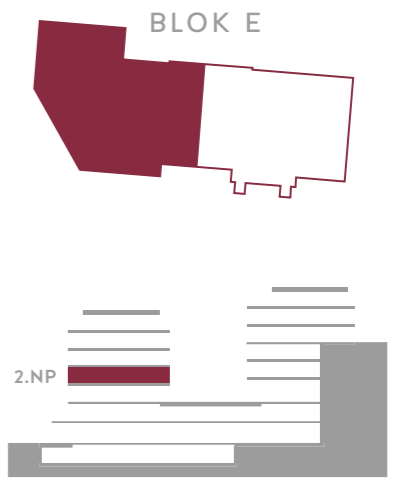
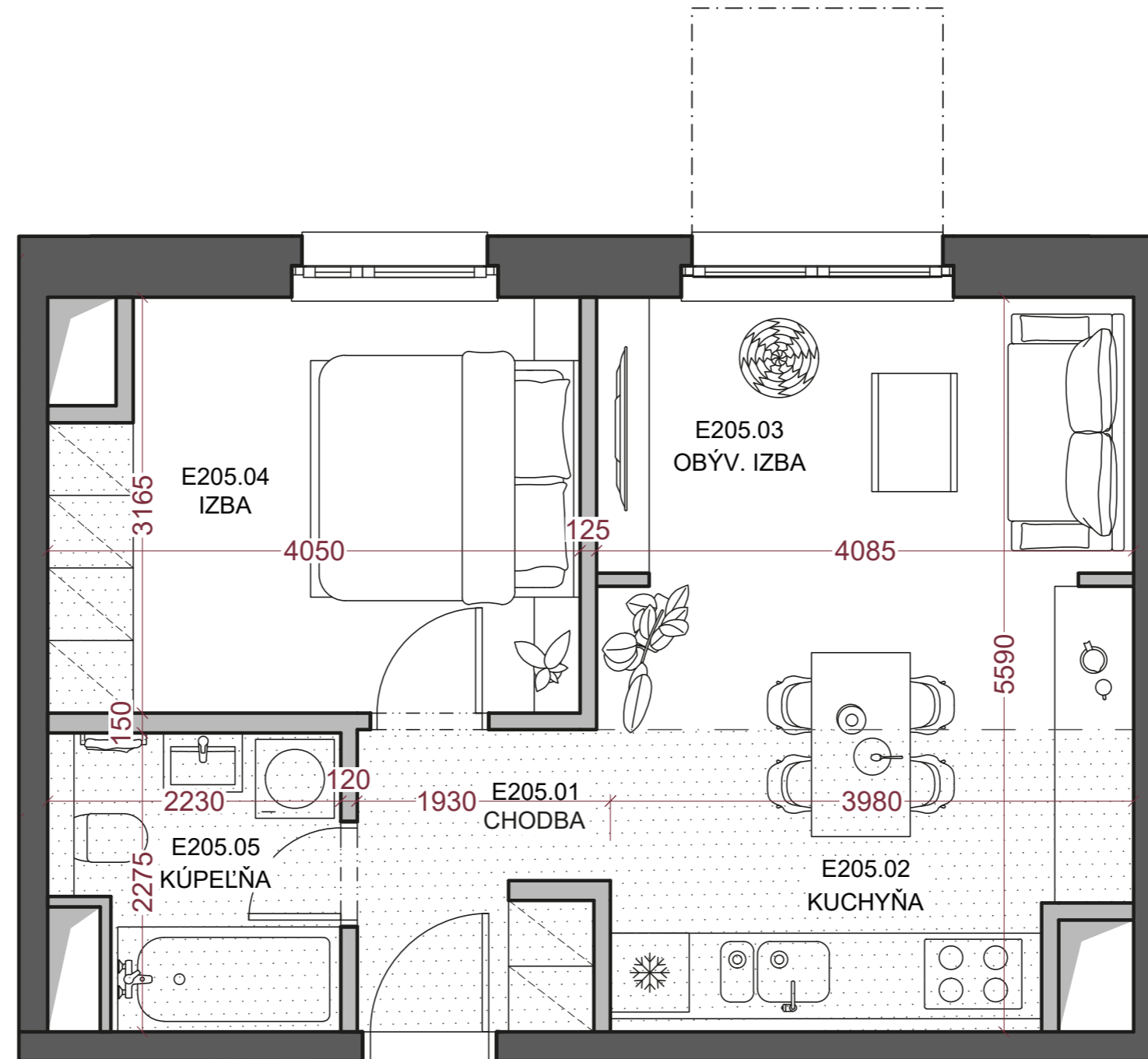
ČÍSLO DOMU
BUILDING **V2A**

POČET IZIEB
ROOMS **2**

- 01. Chodba 8,2 m²
01. Hall
- 02. Kuchyňa 9,6 m²
02. Kitchen
- 03. Obývacia izba 8,6 m²
03. Living room
- 04. Izba 12,2 m²
04. Room
- 05. Kúpeľňa 4,6 m²
05. Bathroom

Plocha interiéru **43,2 m²**
Interior area

Celková plocha apartmánu **43,20 m²**
Apartment area



Plocha priestorov pod svetlou výškou do 1,3 m vo výmere - m² nie je započítaná do plochy apartmánu.

The part of the premises where floor-to-ceiling height is below 1,3 m, which means the area of - m², is not included in the whole area of the apartment.

..... Znížená svetlá výška
Lowered floor-to-ceiling height

DEVELOPER:
VYDRICA DEVELOPMENT, a.s.
STEINERKA Business Center
Legionárska 10, 811 07 Bratislava

PREDAJ/SALES:
+421 910 635 645 | predaj@vydrica.com
www.vydrica.com