

ČÍSLO APARTMÁNU  
APARTMENT **H405**

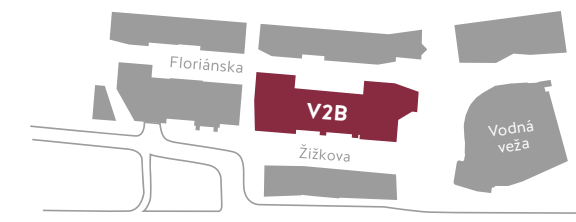
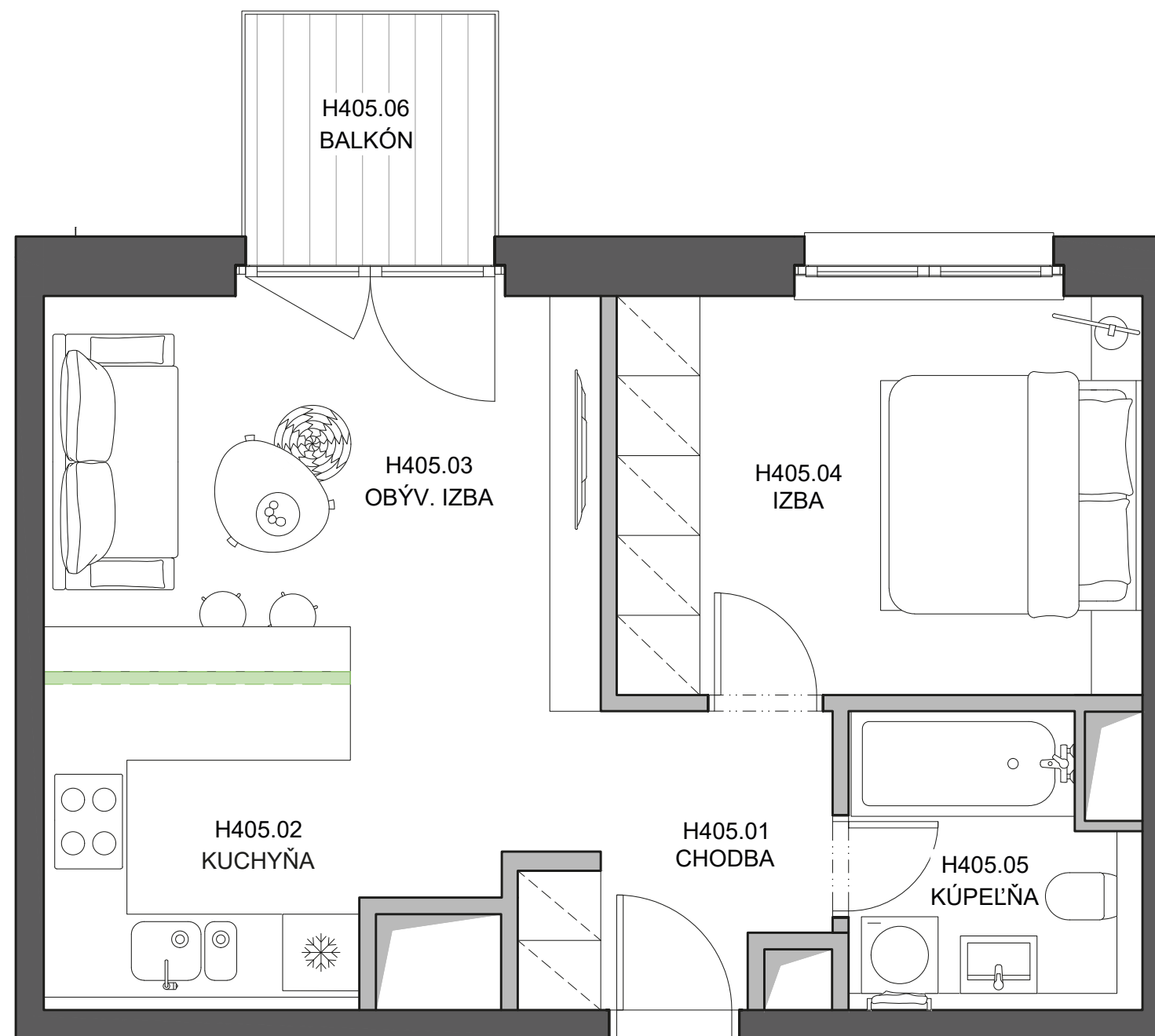
PODLAŽIE  
FLOOR **4.NP**

ČÍSLO DOMU  
BUILDING **V2B**

POČET IZIEB  
ROOMS **2**

- 01. Chodba 4,9 m<sup>2</sup>  
01. Hall
- 02. Kuchyňa 9,6 m<sup>2</sup>  
02. Kitchen
- 03. Obývacia izba 13,2 m<sup>2</sup>  
03. Living room
- 04. Izba 12,9 m<sup>2</sup>  
04. Room
- 05. Kúpeľňa 4,9 m<sup>2</sup>  
05. Bathroom
- Plocha interiéru 45,5 m<sup>2</sup>**  
Interior area
- 06. Balkón 3,8 m<sup>2</sup>  
06. Balcony

**Celková plocha apartmánu 49,30 m<sup>2</sup>**  
Apartment area



**DEVELOPER:**  
VYDRICA DEVELOPMENT, a.s.  
STEINERKA Business Center  
Legionárska 10, 811 07 Bratislava

**PREDAJ/SALES:**  
+421 910 635 645 | predaj@vydrica.com  
www.vydrica.com



ČÍSLO APARTMÁNU  
APARTMENT **H405**

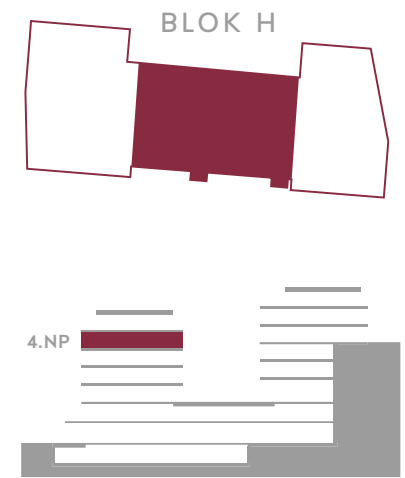
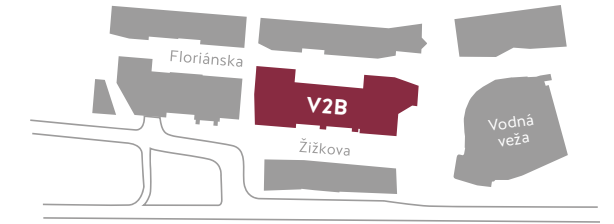
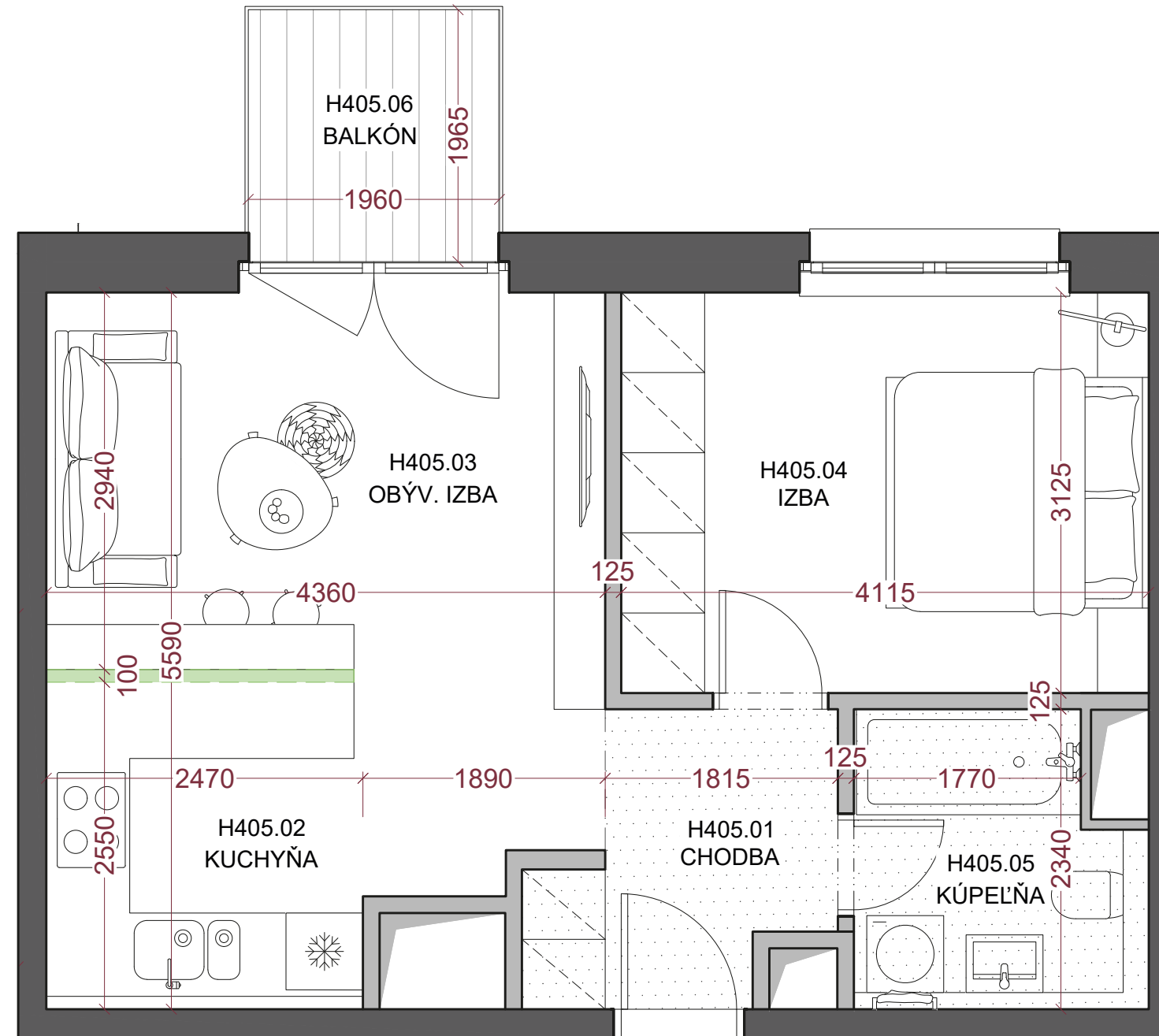
PODLAŽIE  
FLOOR **4.NP**

ČÍSLO DOMU  
BUILDING **V2B**

POČET IZIEB  
ROOMS **2**

01. Chodba 01. Hall	4,9 m <sup>2</sup>
02. Kuchyňa 02. Kitchen	9,6 m <sup>2</sup>
03. Obývacia izba 03. Living room	13,2 m <sup>2</sup>
04. Izba 04. Room	12,9 m <sup>2</sup>
05. Kúpeľňa 05. Bathroom	4,9 m <sup>2</sup>
<b>Plocha interiéru</b> Interior area	<b>45,5 m<sup>2</sup></b>
06. Balkón 06. Balcony	3,8 m <sup>2</sup>

**Celková plocha apartmánu**  
Apartment area **49,30 m<sup>2</sup>**



Plocha priestorov pod svetlou výškou do 1,3 m vo výmere - m<sup>2</sup> nie je započítaná do plochy apartmánu.

The part of the premises where floor-to-ceiling height is below 1,3 m, which means the area of - m<sup>2</sup>, is not included in the whole area of the apartment.

Murovaná pórobetónová priečka do výšky pracovnej dosky kuchynskej linky. A masonry partition wall made of aerated concrete, extending up to the level of the kitchen countertop.

Znížená svetlá výška. Lowered floor-to-ceiling height.

**DEVELOPER:**  
VYDRICA DEVELOPMENT, a.s.  
STEINERKA Business Center  
Legionárska 10, 811 07 Bratislava

**PREDAJ/SALES:**  
+421 910 635 645 | predaj@vydrica.com  
www.vydrica.com