

ČÍSLO APARTMÁNU **D507**  
APARTMENT

PODLAŽIE **5.NP**  
FLOOR

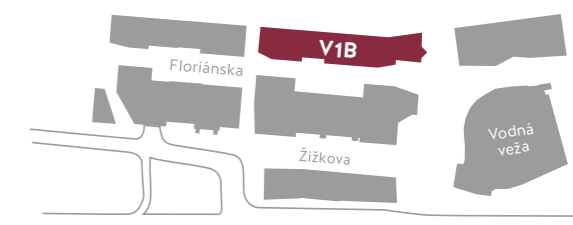
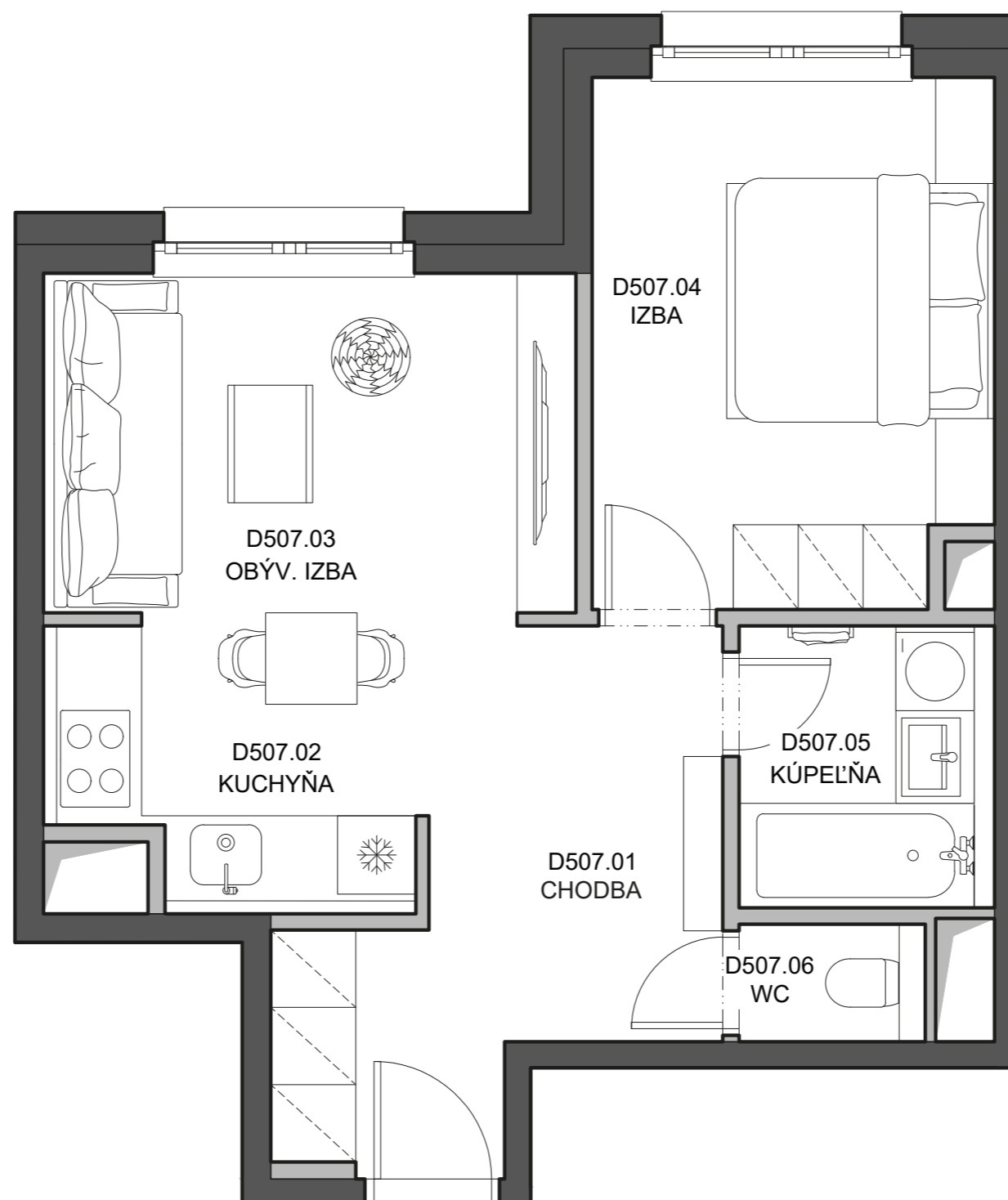
ČÍSLO DOMU **V1B**  
BUILDING

POČET IZIEB **2**  
ROOMS

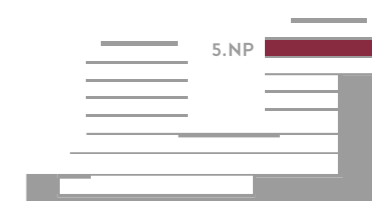
01. Chodba 01. Hall	8,7 m <sup>2</sup>
02. Kuchyňa 02. Kitchen	7,4 m <sup>2</sup>
03. Obývacia izba 03. Living room	10,9 m <sup>2</sup>
04. Izba 04. Room	12,2 m <sup>2</sup>
05. Kúpeľňa 05. Bathroom	4,2 m <sup>2</sup>
06. WC 06. Toilet	1,4 m <sup>2</sup>

**Plocha interiéru** **44,8 m<sup>2</sup>**  
Interior area

**Celková plocha apartmánu** **44,80 m<sup>2</sup>**  
Apartment area



BLOK D



**DEVELOPER:**  
VYDRICA DEVELOPMENT, a.s.  
STEINERKA Business Center  
Legionárska 10, 811 07 Bratislava

**PREDAJ/SALES:**  
+421 910 635 645 | predaj@vydrica.com  
www.vydrica.com

ČÍSLO APARTMÁNU  
APARTMENT **D507**

PODLAŽIE  
FLOOR **5.NP**

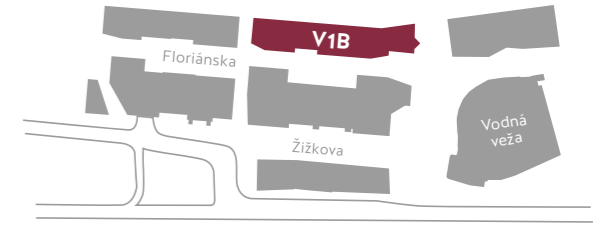
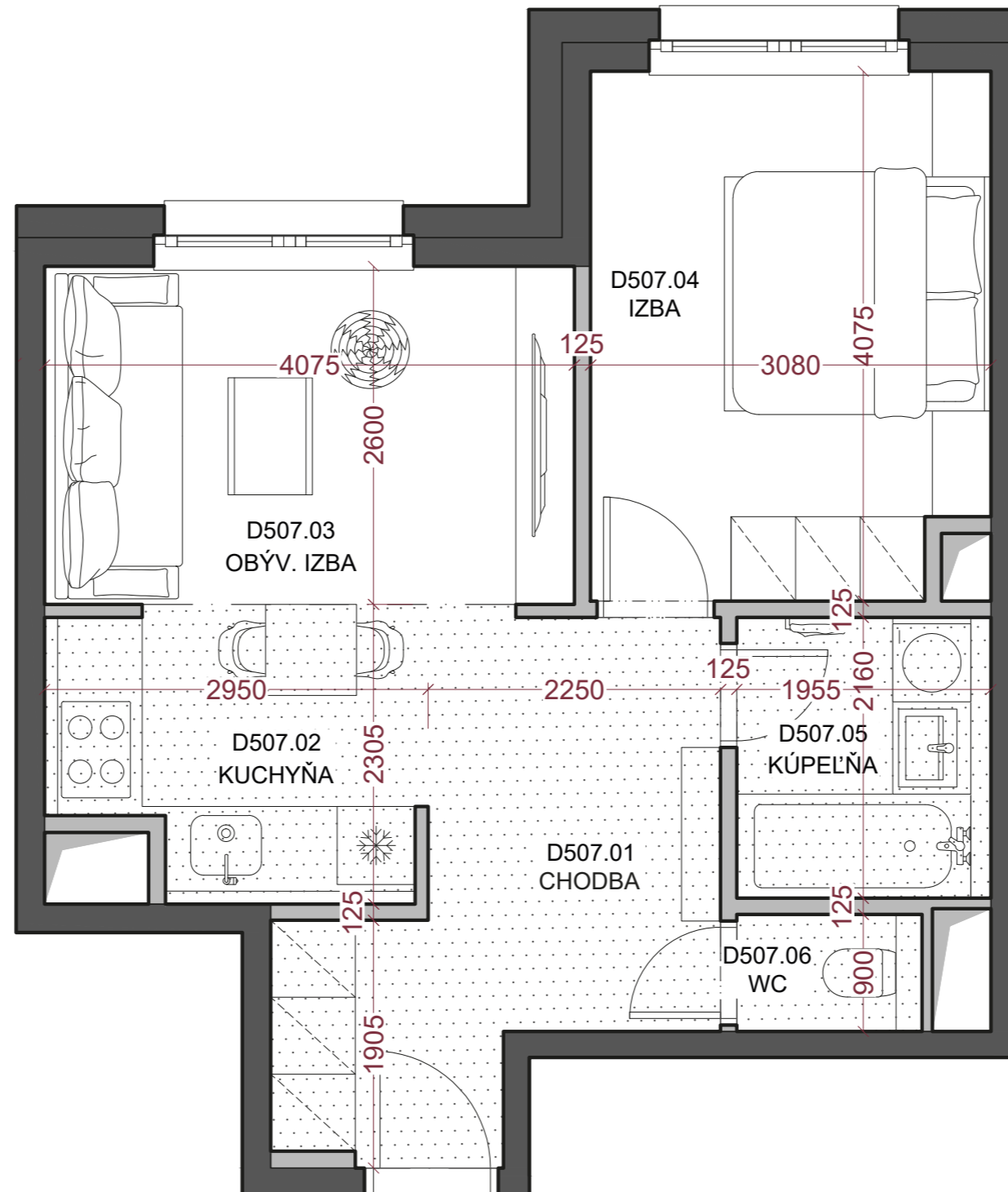
ČÍSLO DOMU  
BUILDING **V1B**

POČET IZIEB  
ROOMS **2**

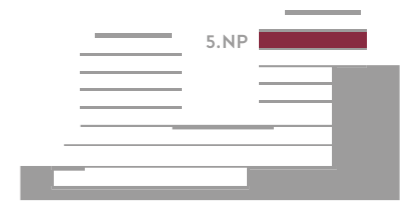
01. Chodba 01. Hall	8,7 m <sup>2</sup>
02. Kuchyňa 02. Kitchen	7,4 m <sup>2</sup>
03. Obývacia izba 03. Living room	10,9 m <sup>2</sup>
04. Izba 04. Room	12,2 m <sup>2</sup>
05. Kúpeľňa 05. Bathroom	4,2 m <sup>2</sup>
06. WC 06. Toilet	1,4 m <sup>2</sup>

**Plocha interiéru**  
Interior area **44,8 m<sup>2</sup>**

**Celková plocha apartmánu**  
Apartment area **44,80 m<sup>2</sup>**



BLOK D



Plocha priestorov pod svetlou výškou do 1,3 m vo výmere - m<sup>2</sup> nie je započítaná do plochy apartmánu.

The part of the premises where floor-to-ceiling height is below 1,3 m, which means the area of - m<sup>2</sup>, is not included in the whole area of the apartment.

..... Znížená svetlá výška  
Lowered floor-to-ceiling height

**DEVELOPER:**  
VYDRICA DEVELOPMENT, a.s.  
STEINERKA Business Center  
Legionárska 10, 811 07 Bratislava

**PREDAJ/SALES:**  
+421 910 635 645 | predaj@vydrica.com  
www.vydrica.com

